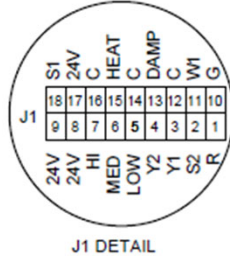
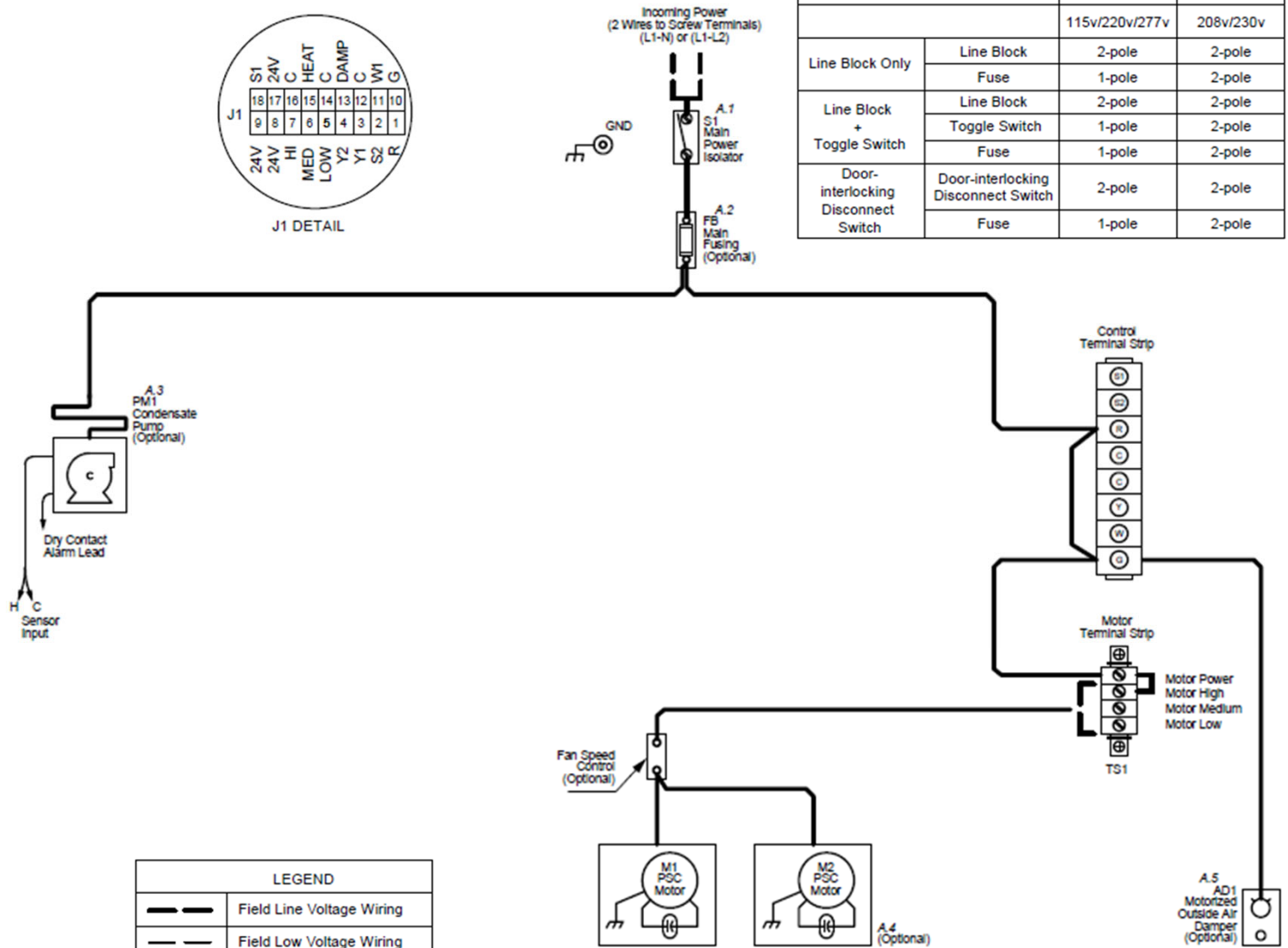


## RBH/RAH Series A, RBV and RAV/RAR

Fan Coil Unit FRBii Wiring Diagram - BC01 – Line Voltage, No EH, PSC



Unit Disconnect / Main Fusing		Line - Neutral (L1-N)	Line - Line (L1-L2)
		115v/220v/277v	208v/230v
Line Block Only	Line Block	2-pole	2-pole
	Fuse	1-pole	2-pole
Line Block + Toggle Switch	Line Block	2-pole	2-pole
	Toggle Switch	1-pole	2-pole
Door-interlocking Disconnect Switch	Door-interlocking Disconnect Switch	2-pole	2-pole
	Fuse	1-pole	2-pole



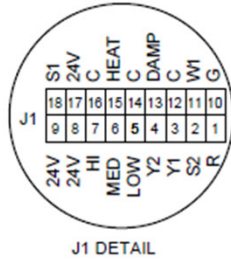
LEGEND	
	Field Line Voltage Wiring
	Field Low Voltage Wiring
	Factory Line Voltage Wiring
	Factory Low Voltage Wiring
	Factory Wire Harness

**NOTES:**

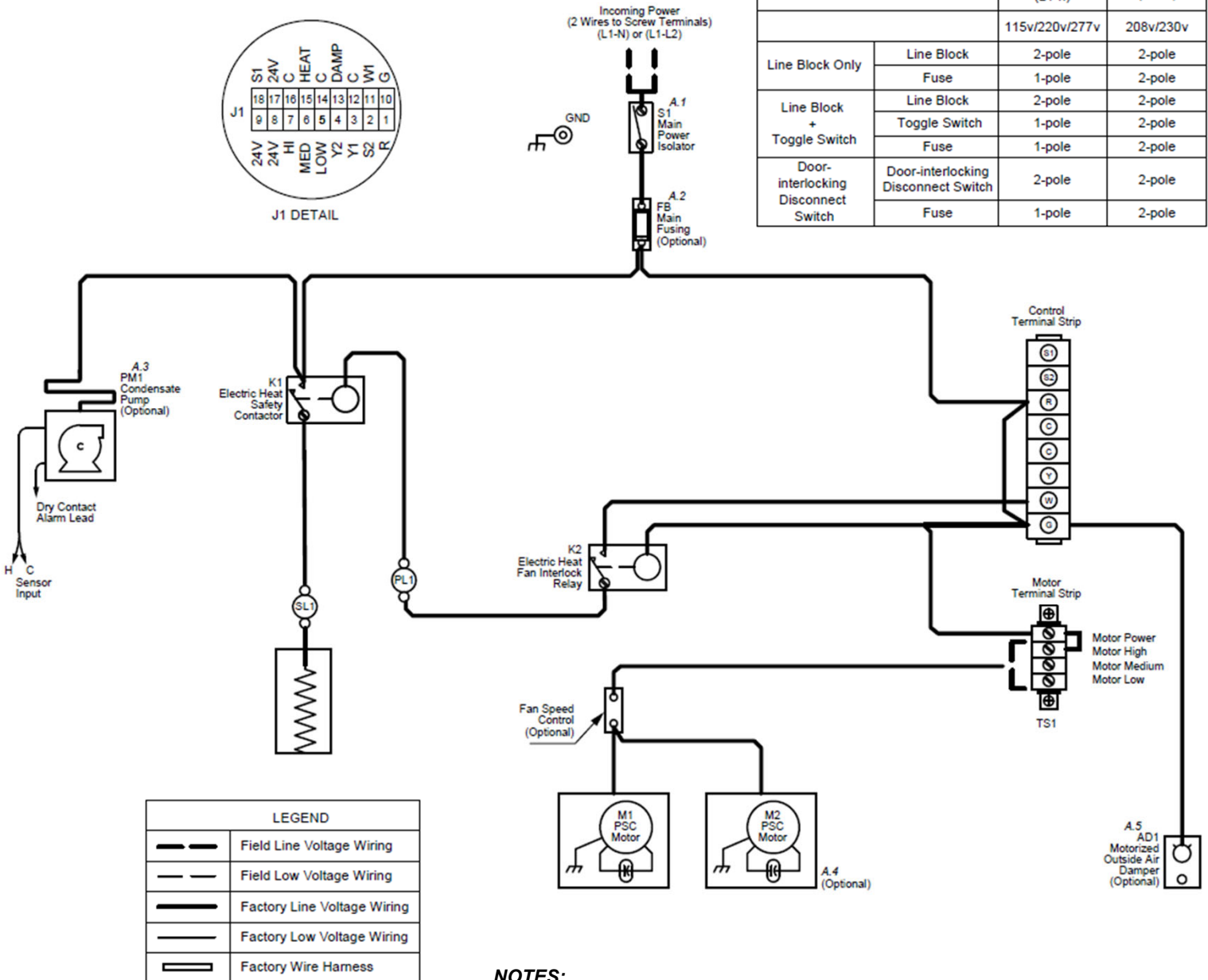
- A. Device ordering options
  1. Optional incoming power disconnect:
    - None (Line block only)
    - Toggle switch (Available only with non-EH)
    - Door interlocking disconnect switch
  2. Optional main fusing
  3. Optional condensate pump available on RBH\_A and RAH for 115-230V only
  4. 2nd motor depends on unit model/size
  5. Optional motorized OA damper available on RBH\_A, RAV/RAR, RBV only

## RBH/RAH Series A, RBV and RAV/RAR

Fan Coil Unit FRBii Wiring Diagram - BC00 – Line Voltage, EH, PSC



Unit Disconnect / Main Fusing		Line - Neutral (L1-n)	Line - Line (L1-L2)
		115v/220v/277v	208v/230v
Line Block Only	Line Block	2-pole	2-pole
	Fuse	1-pole	2-pole
Line Block + Toggle Switch	Line Block	2-pole	2-pole
	Toggle Switch	1-pole	2-pole
Door-interlocking Disconnect Switch	Door-interlocking Disconnect Switch	2-pole	2-pole
	Fuse	1-pole	2-pole

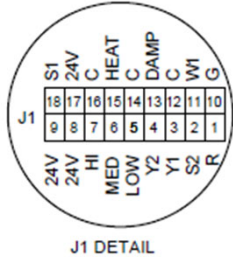


**NOTES:**

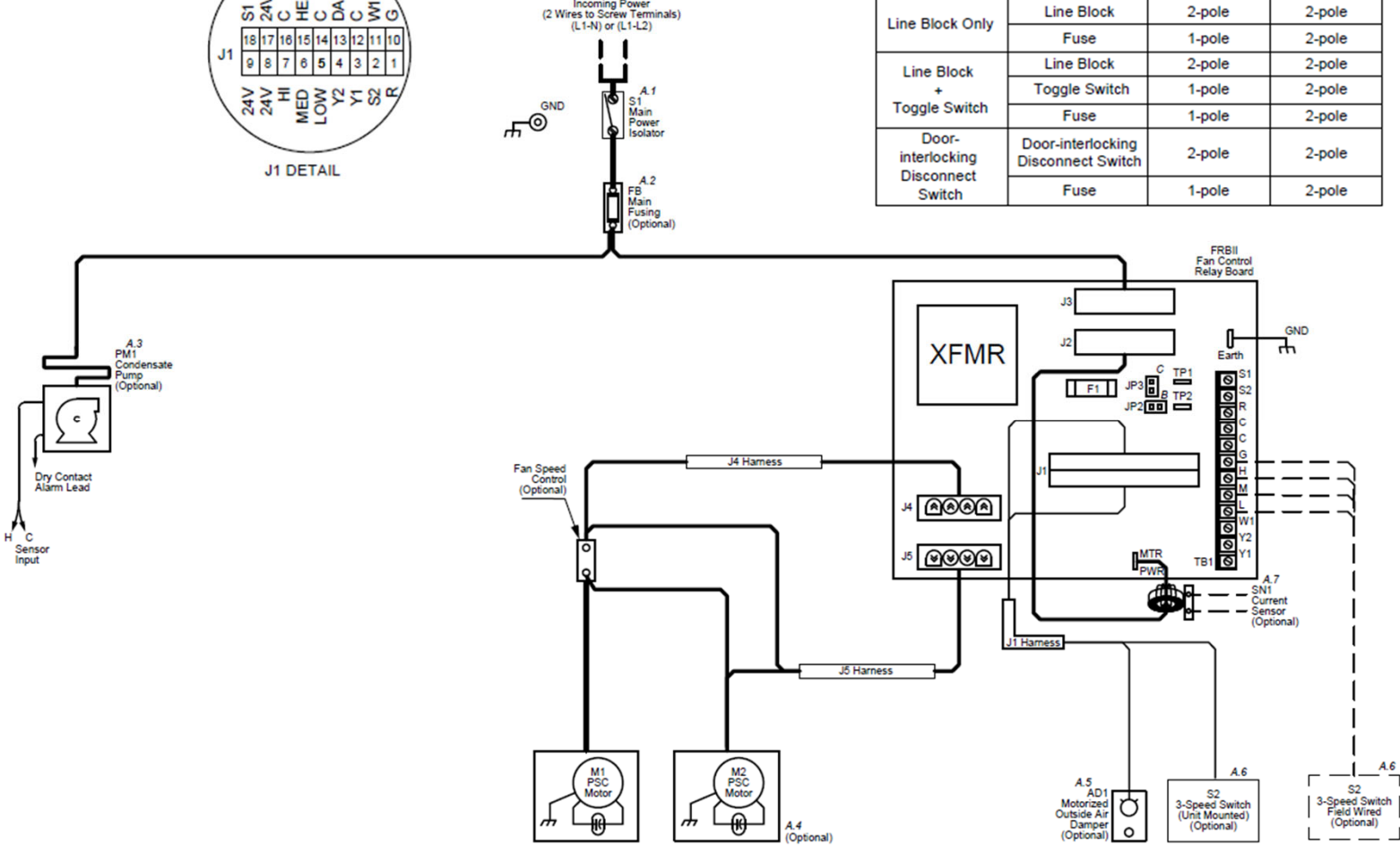
- A. Device ordering options
  1. Optional incoming power disconnect:
    - None (Line block only)
    - Toggle switch (Available only with non-EH)
    - Door interlocking disconnect switch
  2. Optional main fusing
  3. Optional condensate pump available on RBH\_A and RAH for 115-230V only
  4. 2nd motor depends on unit model/size
  5. Optional motorized OA damper available on RBH\_A, RAV/RAR, RBV only

## RBH/RAH Series A, RBV and RAV/RAR

Fan Coil Unit FRBii Wiring Diagram - BC02 – FRBii, No-EH, PSC



Unit Disconnect / Main Fusing		Line - Neutral (L1-N)	Line - Line (L1-L2)
		115v/220v/277v	208v/230v
Line Block Only	Line Block	2-pole	2-pole
	Fuse	1-pole	2-pole
Line Block + Toggle Switch	Line Block	2-pole	2-pole
	Toggle Switch	1-pole	2-pole
Door-interlocking Disconnect Switch	Door-interlocking Disconnect Switch	2-pole	2-pole
	Fuse	1-pole	2-pole



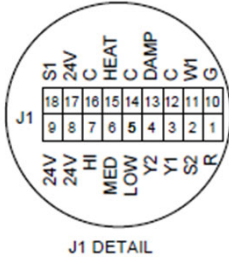
LEGEND	
	Field Line Voltage Wiring
	Field Low Voltage Wiring
	Factory Line Voltage Wiring
	Factory Low Voltage Wiring
	Factory Wire Harness

**NOTES:**

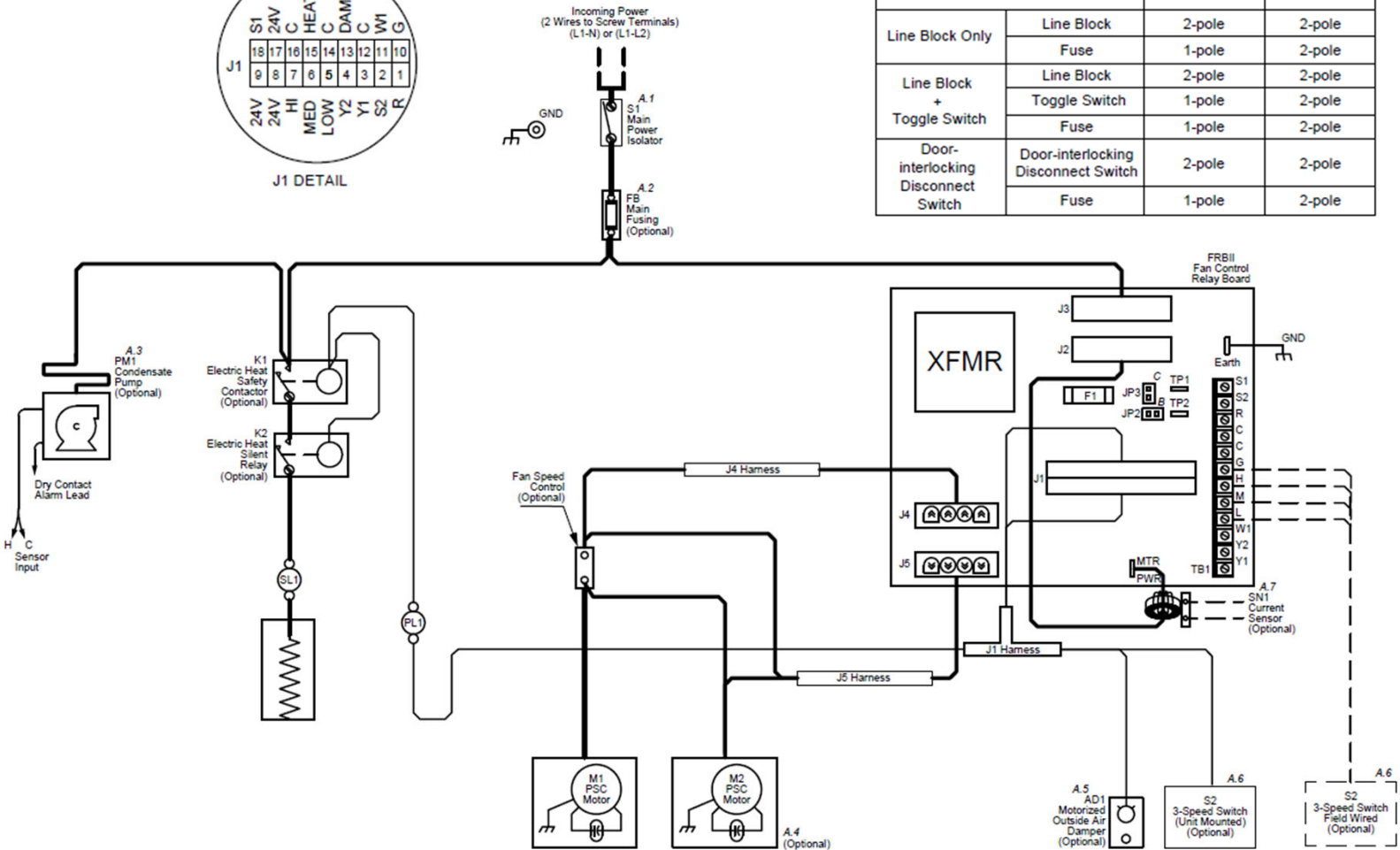
- A. Device ordering options
  1. Optional incoming power disconnect:
    - None (Line block only)
    - Toggle switch (Available only with non-EH)
    - Door interlocking disconnect switch
  2. Optional main fusing
  3. Optional condensate pump available on RBH\_A and RAH for 115-230V only
  4. 2nd motor depends on unit model/size
  5. Optional motorized OA damper available on RBH\_A, RAV/RAR, RBV only
  6. Optional 3-speed switch (Remote/unit mounted)
  7. Optional current sensor with PSC motors on RBH\_A and RAH\_A only
- B. JP2 position depends on optional float switch
- C. JP3 position depends on remote fan control through G terminal

**RBH/RAH Series A, RBV and RAV/RAR**

Fan Coil Unit FRBii Wiring Diagram - BC03 – FRBii, EH, Silent Relay, PSC



Unit Disconnect / Main Fusing		Line - Neutral (L1-N)	Line - Line (L1-L2)
		115v/220v/277v	208v/230v
Line Block Only	Line Block	2-pole	2-pole
	Fuse	1-pole	2-pole
Line Block + Toggle Switch	Line Block	2-pole	2-pole
	Toggle Switch	1-pole	2-pole
Door-interlocking Disconnect Switch	Door-interlocking Disconnect Switch	2-pole	2-pole
	Fuse	1-pole	2-pole



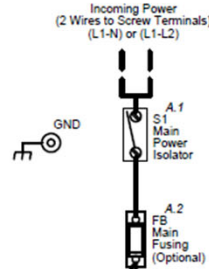
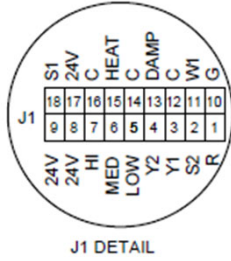
LEGEND	
	Field Line Voltage Wiring
	Field Low Voltage Wiring
	Factory Line Voltage Wiring
	Factory Low Voltage Wiring
	Factory Wire Harness

**NOTES:**

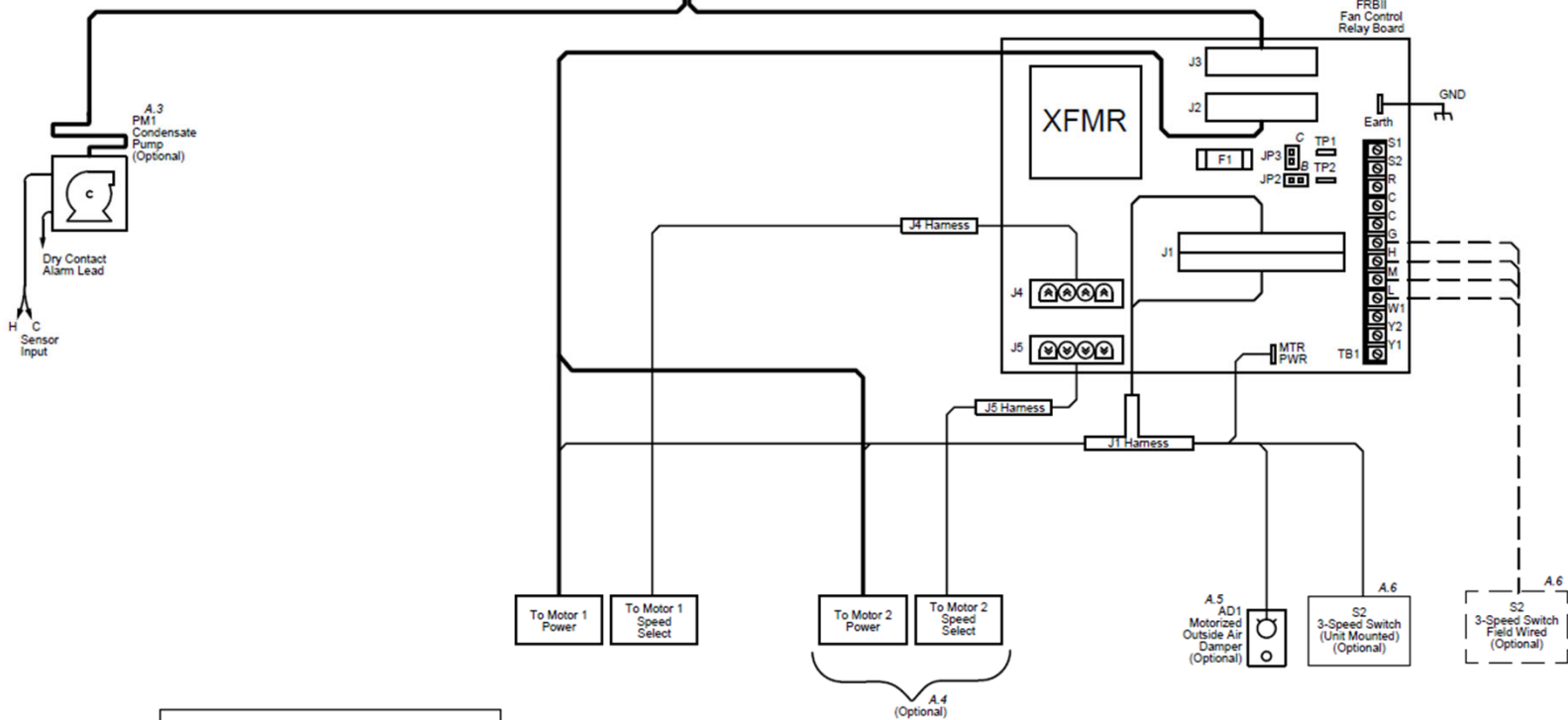
- A. Device ordering options
  1. Optional incoming power disconnect:
    - None (Line block only)
    - Toggle switch (Available only with non-EH)
    - Door interlocking disconnect switch
  2. Optional main fusing
  3. Optional condensate pump available on RBH\_A and RAH for 115-230V only
  4. 2nd motor depends on unit model/size
  5. Optional motorized OA damper available on RBH\_A, RAV/RAR, RBV only
  6. Optional 3-speed switch (Remote/unit mounted)
  7. Optional current sensor with PSC motors on RBH\_A and RAH\_A only
- B. JP2 position depends on optional float switch
- C. JP3 position depends on remote fan control through G terminal

**RBH/RAH Series A, RBV and RAV/RAR**

Fan Coil Unit FRBii Wiring Diagram - BC02 – FRBii, No-EH, ECM 3-Speed Fixed



Unit Disconnect / Main Fusing		Line - Neutral (L1-N)	Line - Line (L1-L2)
		115v/220v/277v	208v/230v
Line Block Only	Line Block	2-pole	2-pole
	Fuse	1-pole	2-pole
Line Block + Toggle Switch	Line Block	2-pole	2-pole
	Toggle Switch	1-pole	2-pole
Door-interlocking Disconnect Switch	Door-interlocking Disconnect Switch	2-pole	2-pole
	Fuse	1-pole	2-pole



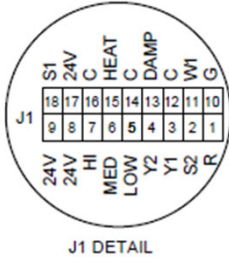
LEGEND	
	Field Line Voltage Wiring
	Field Low Voltage Wiring
	Factory Line Voltage Wiring
	Factory Low Voltage Wiring
	Factory Wire Harness

**NOTES:**

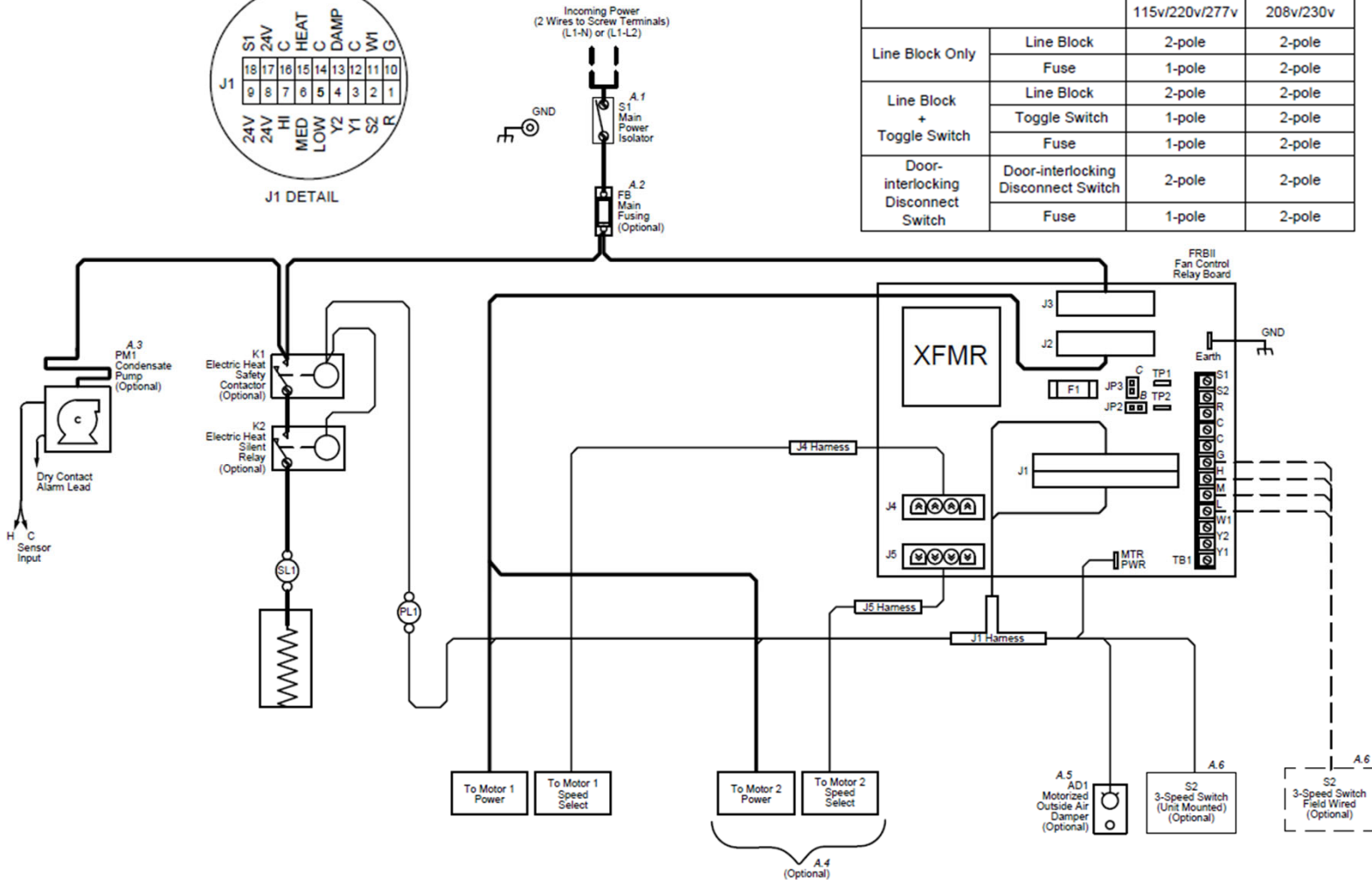
- A. Device ordering options
- Optional incoming power disconnect:
    - None (Line block only)
    - Toggle switch (Available only with non-EH)
    - Door interlocking disconnect switch
  - Optional main fusing
  - Optional condensate pump available on RBH\_A and RAH for 115-230V only
  - 2nd motor depends on unit model/size
  - Optional motorized OA damper available on RBH\_A, RAV/RAR, RBV only
  - Optional 3-speed switch (Remote/unit mounted)
- B. JP2 position depends on optional float switch
- C. JP3 position depends on remote fan control through G terminal

## RBH/RAH Series A, RBV and RAV/RAR

Fan Coil Unit FRBii Wiring Diagram - BC03 – FRBii, EH, ECM 3-Speed Fixed



Unit Disconnect / Main Fusing		Line - Neutral (L1-N)	Line - Line (L1-L2)
		115v/220v/277v	208v/230v
Line Block Only	Line Block	2-pole	2-pole
	Fuse	1-pole	2-pole
Line Block + Toggle Switch	Line Block	2-pole	2-pole
	Toggle Switch	1-pole	2-pole
Door-interlocking Disconnect Switch	Door-interlocking Disconnect Switch	2-pole	2-pole
	Fuse	1-pole	2-pole



LEGEND	
	Field Line Voltage Wiring
	Field Low Voltage Wiring
	Factory Line Voltage Wiring
	Factory Low Voltage Wiring
	Factory Wire Harness

**NOTES:**

A. Device ordering options

- Optional incoming power disconnect:
  - None (Line block only)
  - Toggle switch (Available only with non-EH)
  - Door interlocking disconnect switch
- Optional main fusing
- Optional condensate pump available on RBH\_A and RAH for 115-230V only
- 2nd motor depends on unit model/size
- Optional motorized OA damper available on RBH\_A, RAV/RAR, RBV only
- Optional 3-speed switch (Remote/unit mounted)

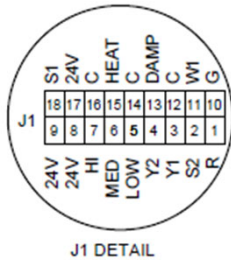
B. JP2 position depends on optional float switch

C. JP3 position depends on remote fan control through G terminal

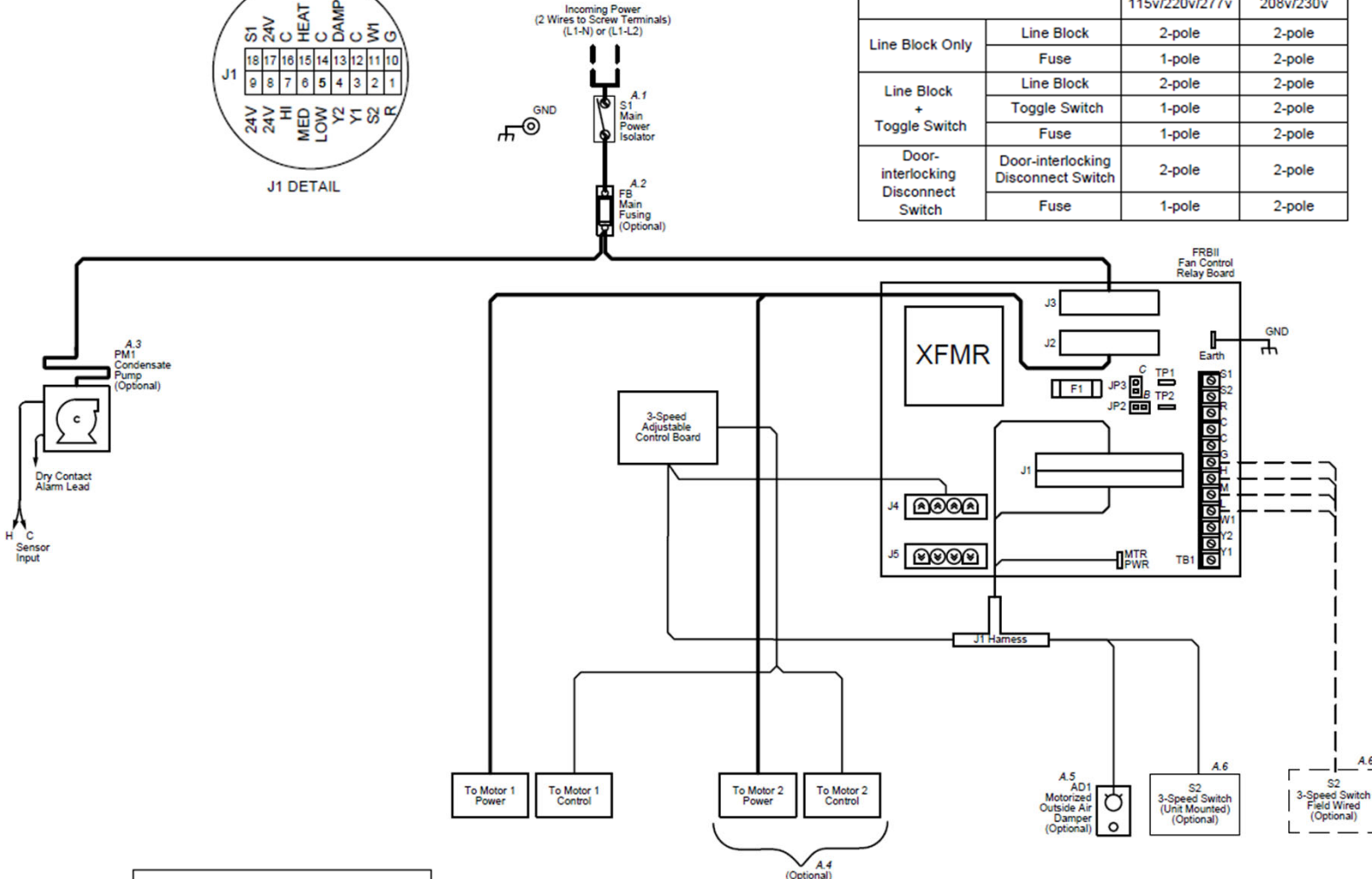


## RBH/RAH Series A, RBV and RAV/RAR

Fan Coil Unit FRBii Wiring Diagram - BC02 – FRBii, No-EH, ECM 3-Speed Adjustable



Unit Disconnect / Main Fusing		Line - Neutral (L1-N)	Line - Line (L1-L2)
		115v/220v/277v	208v/230v
Line Block Only	Line Block	2-pole	2-pole
	Fuse	1-pole	2-pole
Line Block + Toggle Switch	Line Block	2-pole	2-pole
	Toggle Switch	1-pole	2-pole
Door-interlocking Disconnect Switch	Door-interlocking Disconnect Switch	2-pole	2-pole
	Fuse	1-pole	2-pole



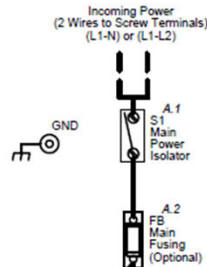
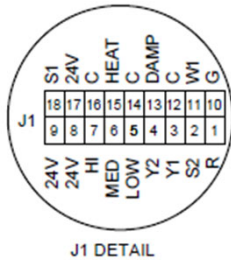
LEGEND	
	Field Line Voltage Wiring
	Field Low Voltage Wiring
	Factory Line Voltage Wiring
	Factory Low Voltage Wiring
	Factory Wire Harness

**NOTES:**

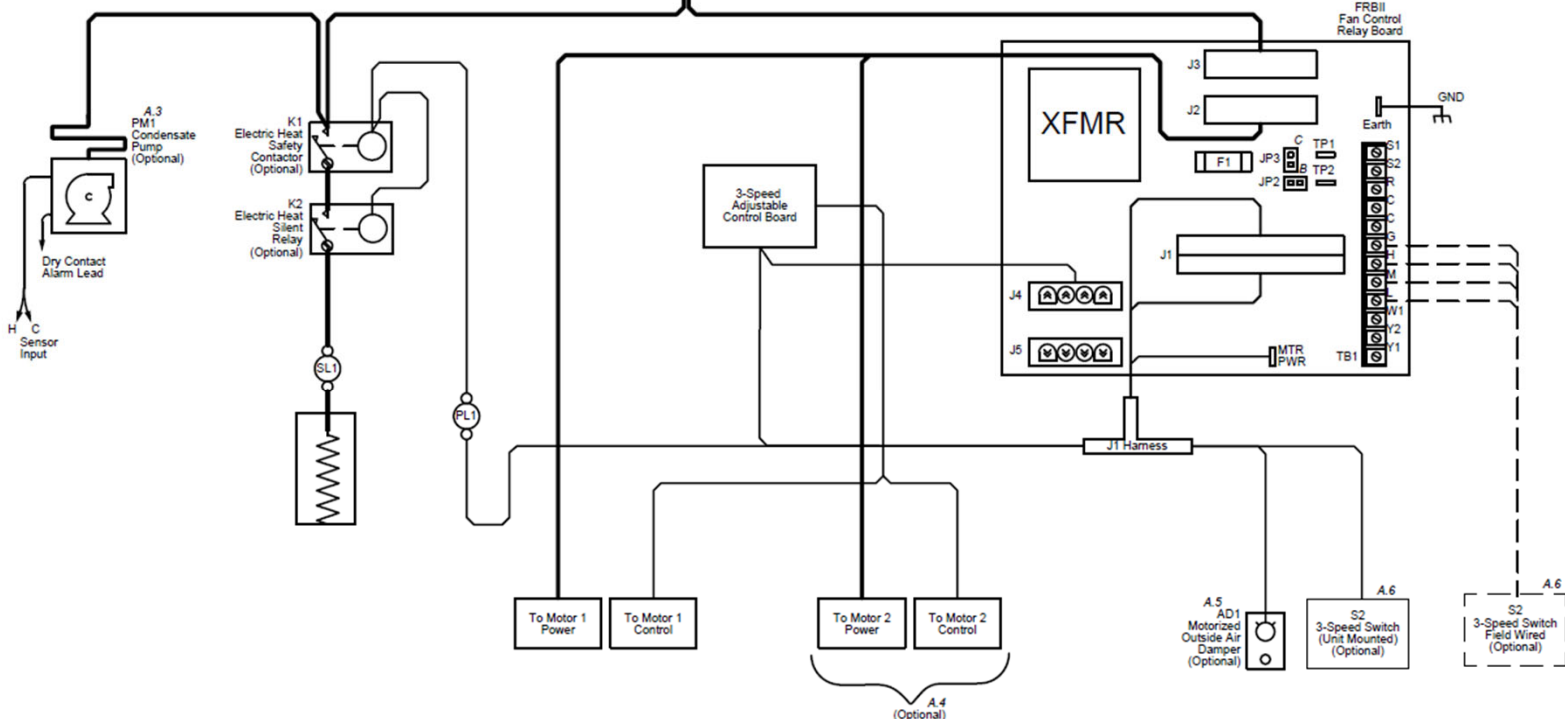
- A. Device ordering options
- Optional incoming power disconnect:
    - None (Line block only)
    - Toggle switch (Available only with non-EH)
    - Door interlocking disconnect switch
  - Optional main fusing
  - Optional condensate pump available on RBH\_A and RAH for 115-230V only
  - 2nd motor depends on unit model/size
  - Optional motorized OA damper available on RBH\_A, RAV/RAR, RBV only
  - Optional 3-speed switch (Remote/unit mounted)
- B. JP2 position depends on optional float switch  
 C. JP3 position depends on remote fan control through G terminal

## RBH/RAH Series A, RBV and RAV/RAR

Fan Coil Unit FRBii Wiring Diagram - BC03 – FRBii, EH, ECM 3-Speed Adjustable



Unit Disconnect / Main Fusing		Line - Neutral (L1-n)	Line - Line (L1-I2)
		115v/220v/277v	208v/230v
Line Block Only	Line Block	2-pole	2-pole
	Fuse	1-pole	2-pole
Line Block + Toggle Switch	Line Block	2-pole	2-pole
	Toggle Switch	1-pole	2-pole
Door-interlocking Disconnect Switch	Door-interlocking Disconnect Switch	2-pole	2-pole
	Fuse	1-pole	2-pole



LEGEND	
	Field Line Voltage Wiring
	Field Low Voltage Wiring
	Factory Line Voltage Wiring
	Factory Low Voltage Wiring
	Factory Wire Harness

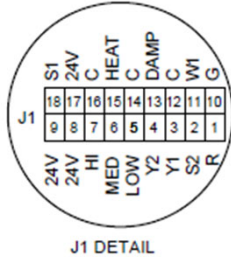
**NOTES:**

- A. Device ordering options
- Optional incoming power disconnect:
    - None (Line block only)
    - Toggle switch (Available only with non-EH)
    - Door interlocking disconnect switch
  - Optional main fusing
  - Optional condensate pump available on RBH\_A and RAH for 115-230V only
  - 2nd motor depends on unit model/size
  - Optional motorized OA damper available on RBH\_A, RAV/RAR, RBV only
  - Optional 3-speed switch (Remote/unit mounted)
- B. JP2 position depends on optional float switch
- C. JP3 position depends on remote fan control through G terminal

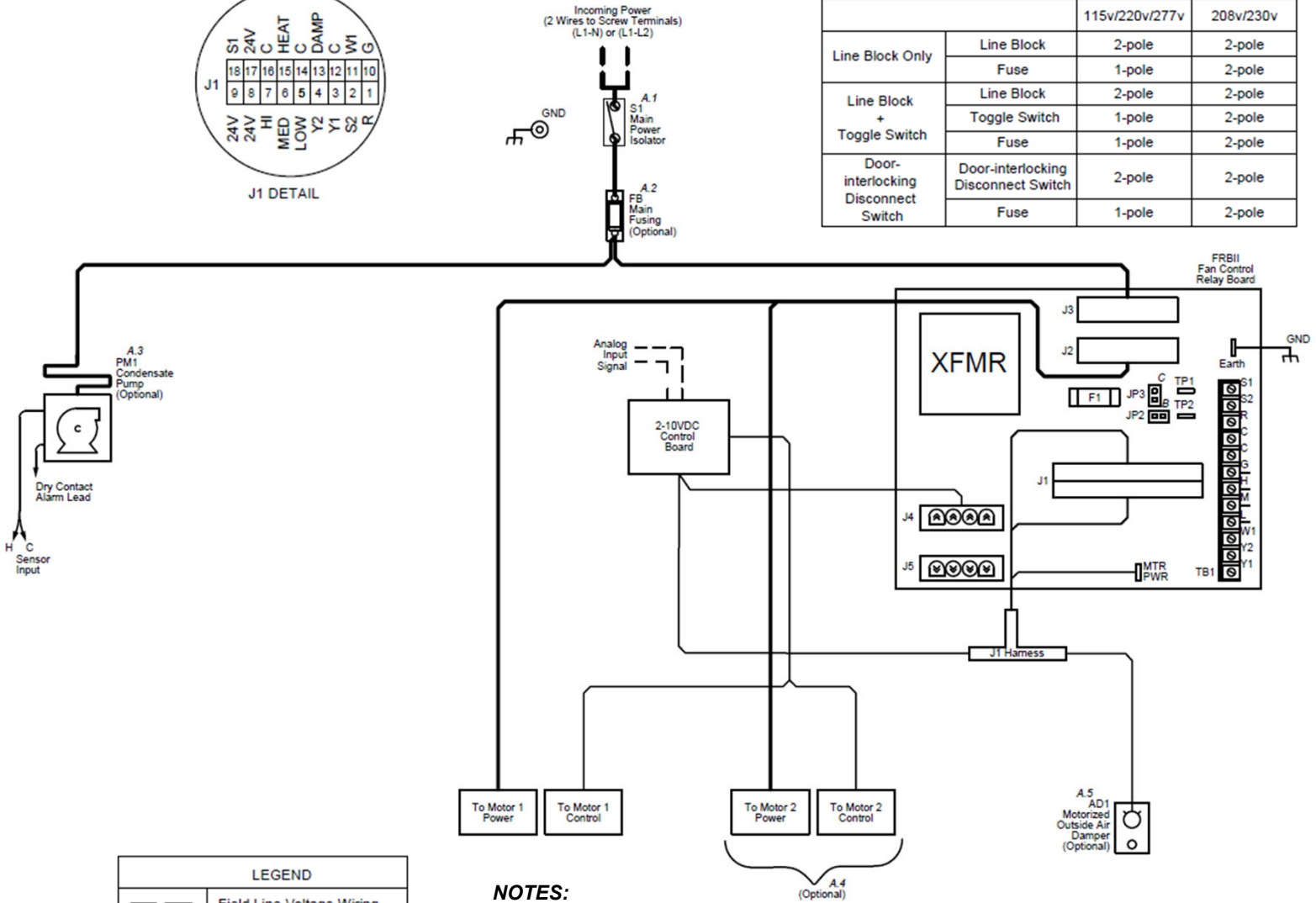


## RBH/RAH Series A, RBV and RAV/RAR

Fan Coil Unit FRBii Wiring Diagram - BC02 – FRBii, NO-EH, ECM 2-10VDC



Unit Disconnect / Main Fusing		Line - Neutral (L1-N)	Line - Line (L1-L2)
		115v/220v/277v	208v/230v
Line Block Only	Line Block	2-pole	2-pole
	Fuse	1-pole	2-pole
Line Block + Toggle Switch	Line Block	2-pole	2-pole
	Toggle Switch	1-pole	2-pole
Door-interlocking Disconnect Switch	Door-interlocking Disconnect Switch	2-pole	2-pole
	Fuse	1-pole	2-pole



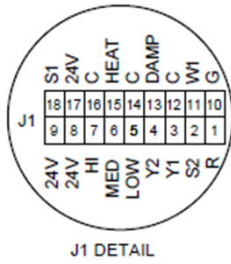
LEGEND	
	Field Line Voltage Wiring
	Field Low Voltage Wiring
	Factory Line Voltage Wiring
	Factory Low Voltage Wiring
	Factory Wire Harness

**NOTES:**

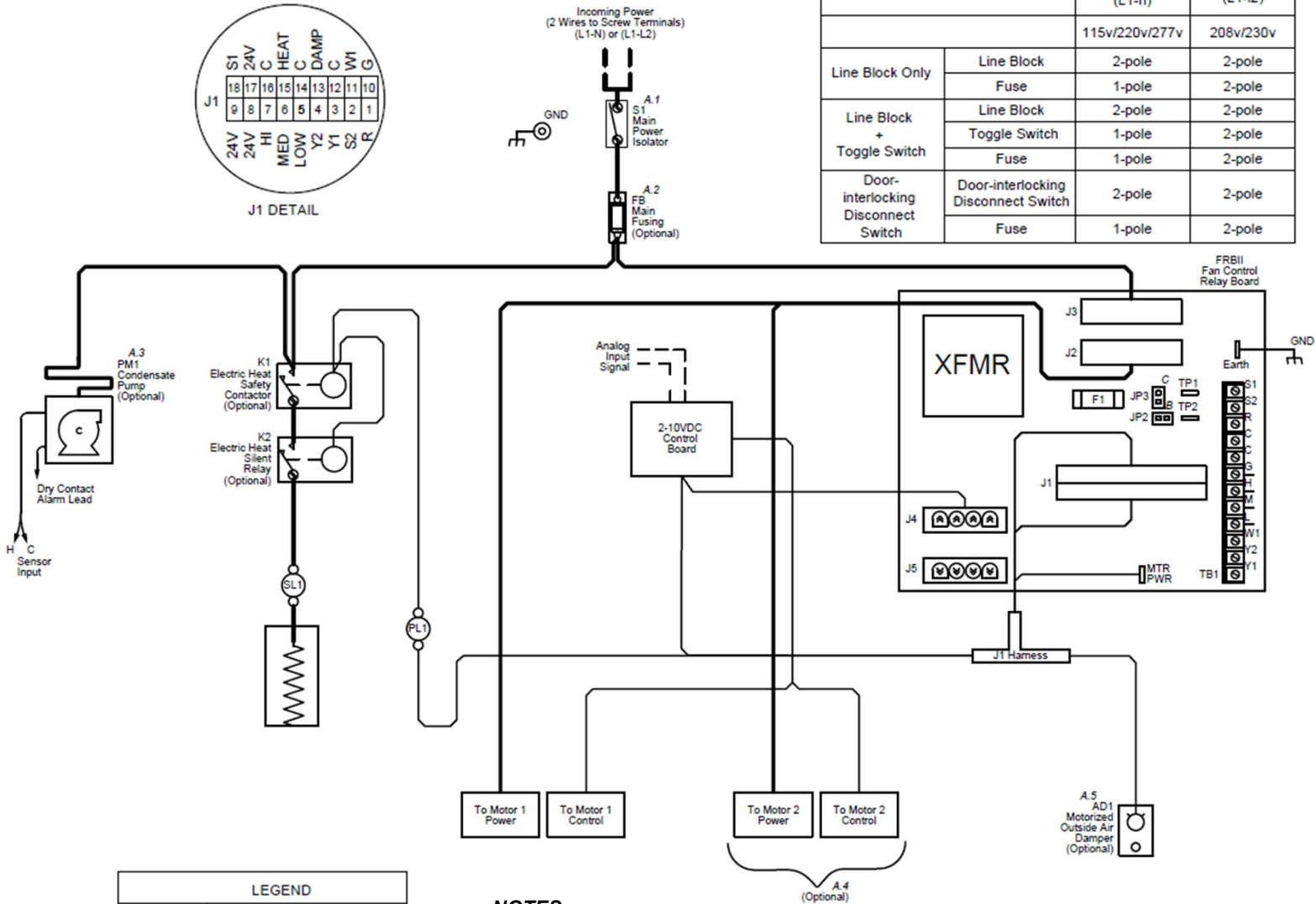
- A. Device ordering options
- Optional incoming power disconnect:
    - None (Line block only)
    - Toggle switch (Available only with non-EH)
    - Door interlocking disconnect switch
  - Optional main fusing
  - Optional condensate pump available on RBH\_A and RAH for 115-230V only
  - 2nd motor depends on unit model/size
  - Optional motorized OA damper available on RBH\_A, RAV/RAR, RBV only
- B. JP2 position depends on optional float switch
- C. JP3 position depends on remote fan control through G terminal

## RBH/RAH Series A, RBV and RAV/RAR

Fan Coil Unit FRBii Wiring Diagram - BC03 – FRBii, EH, ECM 2-10VDC



Unit Disconnect / Main Fusing		Line - Neutral (L1-N)	Line - Line (L1-L2)
		115v/220v/277v	208v/230v
Line Block Only	Line Block	2-pole	2-pole
	Fuse	1-pole	2-pole
Line Block + Toggle Switch	Line Block	2-pole	2-pole
	Toggle Switch	1-pole	2-pole
Door-interlocking Disconnect Switch	Door-interlocking Disconnect Switch	2-pole	2-pole
	Fuse	1-pole	2-pole



**NOTES:**

- A. Device ordering options
  - 1. Optional incoming power disconnect:
    - None (Line block only)
    - Toggle switch (Available only with non-EH)
    - Door interlocking disconnect switch
  - 2. Optional main fusing
  - 3. Optional condensate pump available on RBH\_A and RAH for 115-230V only
  - 4. 2nd motor depends on unit model/size
  - 5. Optional motorized OA damper available on RBH\_A, RAV/RAR, RBV only
- B. JP2 position depends on optional float switch
- C. JP3 position depends on remote fan control through G terminal

**RBH/RAH Series A, RBV and RAV/RAR**

Fan Coil Unit FRBii Wiring Diagram Revision History

Revision Date	Version Date	Initiated By	Description
1/18/2023	12/2/2022	J. Letterman	Corrected page 1 drawing which showed the electric heat but should not have been shown.